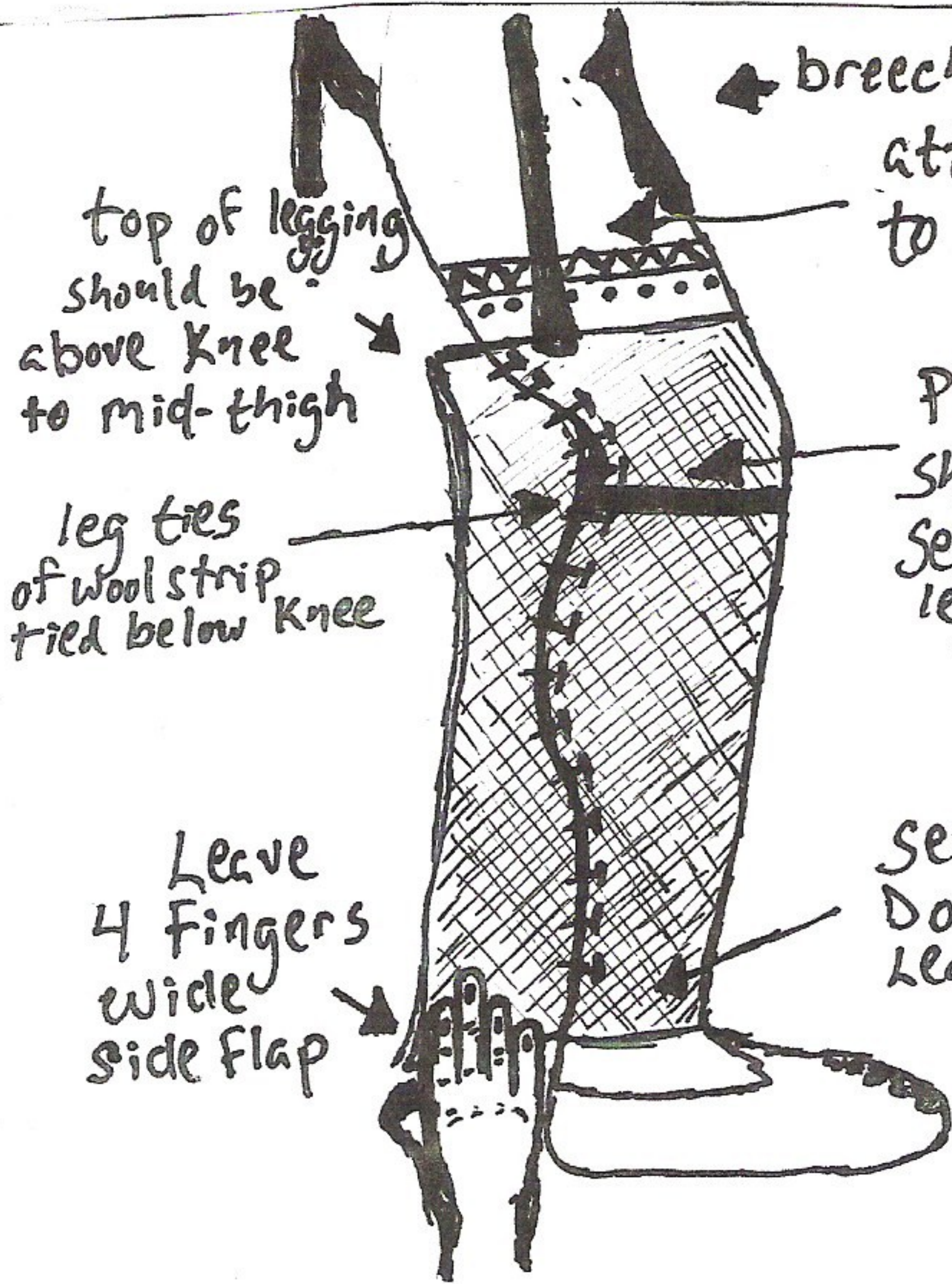


# Brayet & Mitasses

Instructions and references  
to their construction in  
New France



breech clout to mid-thigh  
attach strip of wool  
to tie leggings to belt

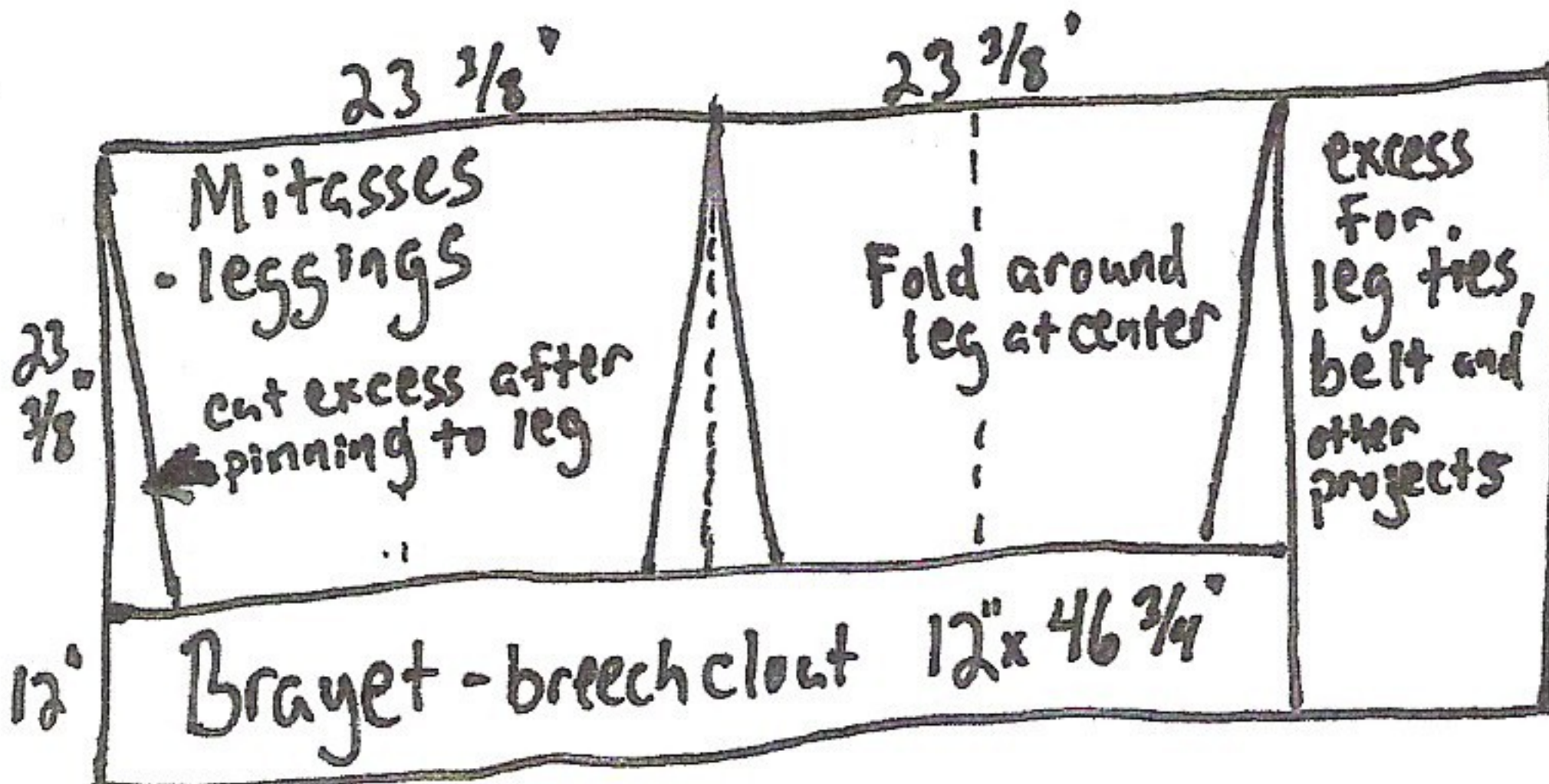
top of legging  
should be  
above knee  
to mid-thigh

leg ties  
of wool strip  
tied below knee

Pin tight to leg  
Should fit like a stocking  
Seam is on the outside of  
leg not in back of leg

Leave  
4 fingers  
wide  
side flap

sew along pin lines  
Do not sew all the way down  
Leave room for foot to get out



Using a modern yard of wool broadcloth  
you can make a pair of leggings,  
a breechclout and leg ties. The excess  
can be made into a belt by sewing  
two strips together.

An ell equals 46 3/4"